

RAILWAY SYSTEM

PLATFORM GAP FILLER (PGF)

S.K. Polymer created Platform Gap Filler(PGF) to prevent people from falling into the space between trains and platforms.

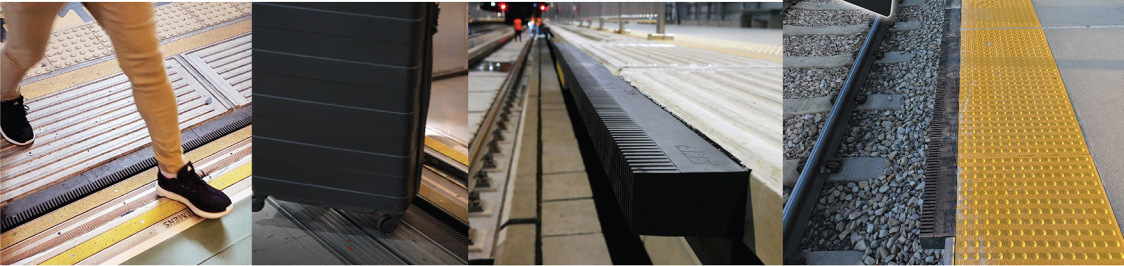
Our PGF was implemented in Thailand's Airport Rail Link, as well as in the United States and Norway.

We intend to make transportation safer for passengers of all ages, as well as persons with disabilities worldwide.

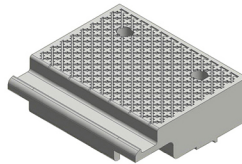
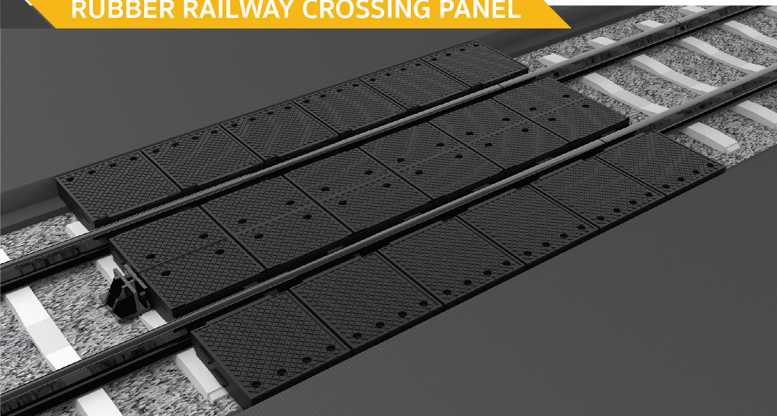
Engineering Design

Durable Material

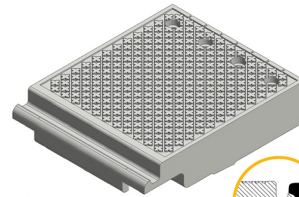
Flexible Design



RUBBER RAILWAY CROSSING PANEL



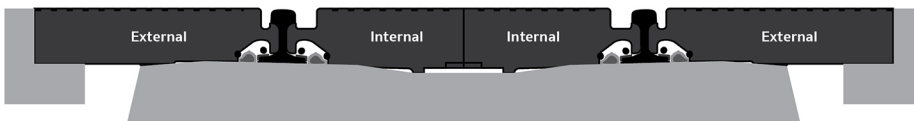
Rubber Railway Level Crossing Panel | Internal
Dimension : 600 x 526.5 x 170 mm.



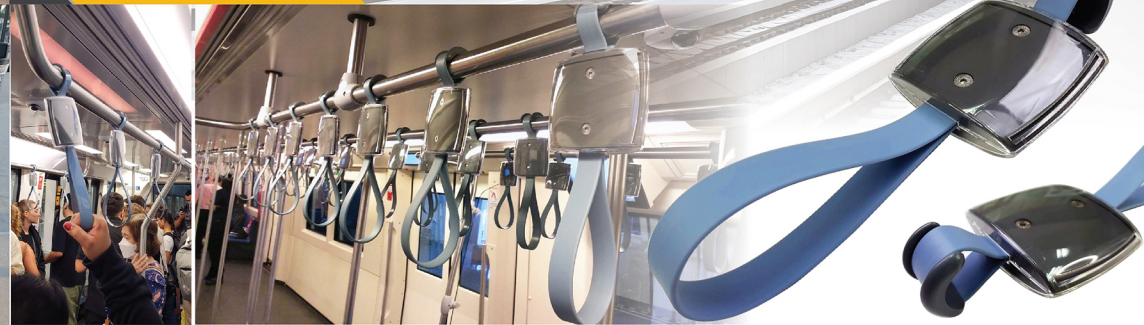
Rubber Railway Level Crossing Panel | External
Dimension : 600 x 728 x 170 mm.



Rubber Level crossing panels at road crossings, natural rubber products strengthened with a specific formula are placed between railroad tracks to replace brittle concrete slabs. These rubber substitutes are supple, flexible, and incredibly shock-absorbing; they guarantee longevity and a more comfortable, vibration-free ride for cars, as well as greatly prolonging their service life.



STRAP HANGER

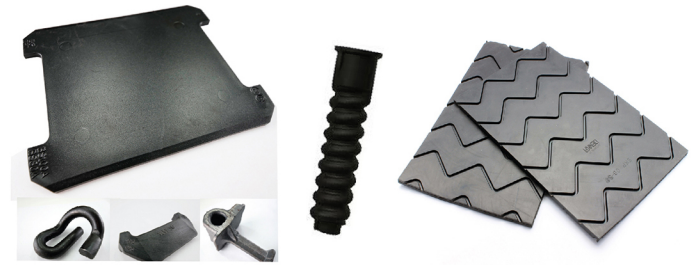
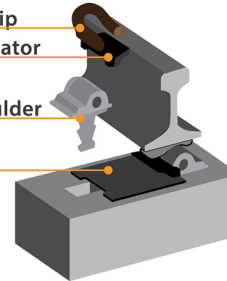


FASTENING SYSTEM COMPONENTS

Elastic Clip
Rail Insulator

Rail Shoulder

Rail Pad



SLEEPER GAP FILLER



RUBBER WEDGE



BALLAST REGULATOR BLOOM

UNDER SLEEPER PAD

RUBBER FOR MOLD CONCRETE RAILWAY SLEEPER



Jaroonrat thiraksaphan
jaroonrat@skthai.com
Tel: 0615645539

www.skpbrand.com

Quality System

ISO 9001:2015 | IATF 16949:2016 | ISO 13485:2016



S.K. Polymer Co., Ltd.
Address: 166 Soi Thiantalay 20, Bangkhunthian-Chiyatalay Rd.,
Samaedum, Bangkhunthian, Bangkok, Thailand 10150
Tel: (66)2892 1092 up to 7