

# RAILWAY SYSTEM

## PLATFORM GAP FILLER (PGF)

S.K. Polymer created Platform Gap Filler(PGF) to prevent people from falling into the space between trains and platforms.

Our PGF was implemented in Thailand's Airport Rail Link, as well as in the United States and Norway.

We intend to make transportation safer for passengers of all ages, as well as persons with disabilities worldwide.

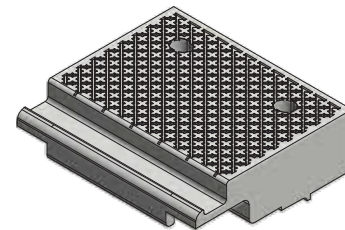
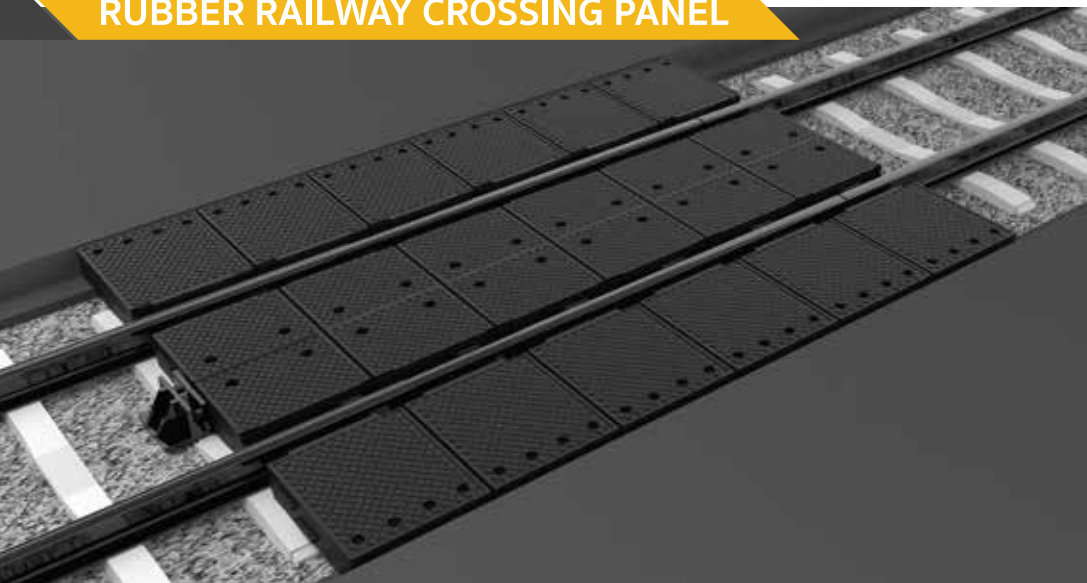
Engineering  
Design

Durable  
Material

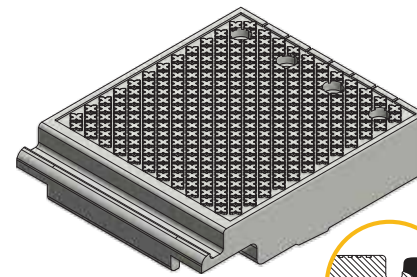
Flexible  
Design



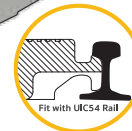
## RUBBER RAILWAY CROSSING PANEL



Rubber Railway  
Level Crossing Panel | **Internal**  
Dimension : 600 x 526.5 x 170 mm.

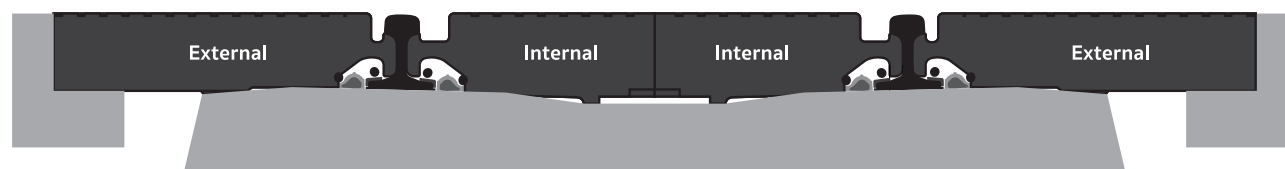


Rubber Railway  
Level Crossing Panel | **External**  
Dimension : 600 x 728 x 170 mm.



Rubber Level crossing panels at road crossings, natural rubber products strengthened with a specific formula are placed between railroad tracks to replace brittle concrete slabs.

These rubber substitutes are supple, flexible, and incredibly shock-absorbing; they guarantee longevity and a more comfortable, vibration-free ride for cars, as well as greatly prolonging their service life.



## STRAP HANGER

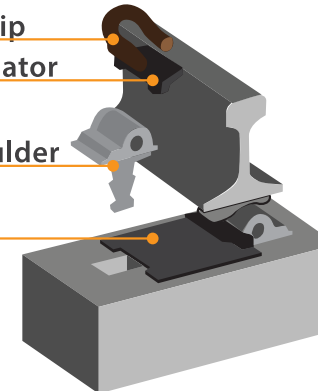


## FASTENING SYSTEM COMPONENTS

Elastic Clip  
Rail Insulator

Rail Shoulder

Rail Pad



## SLEEPER GAP FILLER



## RUBBER WEDGE

## BALLAST REGULATOR BROOM

## UNDER SLEEPER PAD

## RUBBER FOR MOLD CONCRETE RAILWAY SLEEPER



marketing@skthai.com

www.skpbrand.com

Quality System :

E&E Plant  
ISO 9001:2015

Automotive Plant  
ISO 9001:2015  
IATF 16949:2016

Pharma Plant  
ISO 9001:2015  
ISO 13485:2016



S.K. Polymer Co., Ltd.  
Address: 166 Soi Thiantalay 20, Bangkhunthian-Chyatalay Rd.,  
Samaedum, Bangkhunthian, Bangkok, Thailand 10150  
Tel: (66)2892 1092 up to 7